

2019 LAS VEGAS CHALLENGE

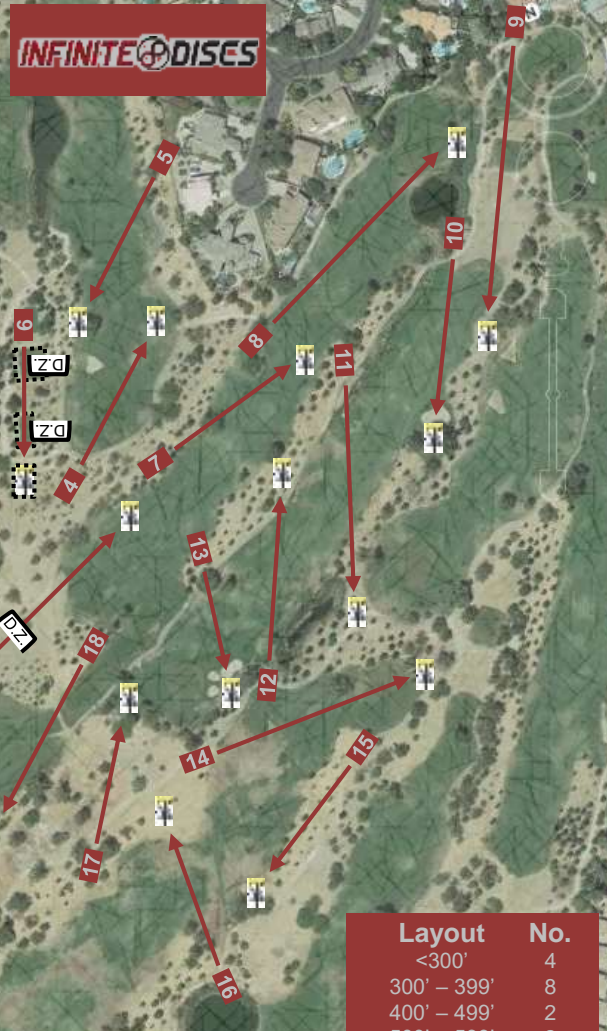
Course Infinite Discs Mini Caddy Book

Practice Dates • February 18th – 20th
 Player's Meeting • 7:00 PM • February 20th
 Event Dates • February 21st – 24th

vs. 2

Course Infinite Discs Overall Map

Hole	Dist.	Par
1	273'	3
2	354'	3
3	621'	4
4	390'	3
5	360'	3
6	294'	4
7	363'	3
8	555'	4
9	627'	4
10	381'	3
11	500'	4
12	375'	3
13	249'	3
14	453'	3
15	345'	3
16	327'	3
17	328'	3
18	405'	3
Total	7,200'	59
Ave.	400'	

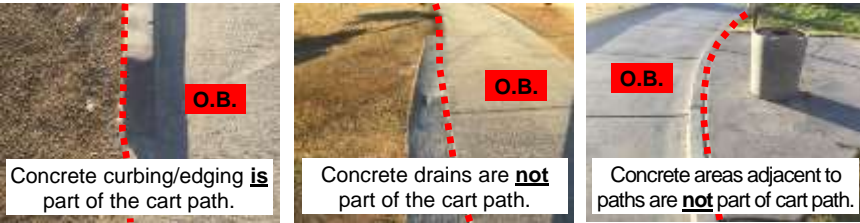


2018 Summary
 Easiest Course
 2 Aces / 12 Eagles
 30% Pros & 7% Ams Under Par
 60% Pros & 87% Ams Over Par
 15% of Scores Birdied or Better
 2% of Scores Triple Bogied or Worse

Layout	No.
<300'	4
300' – 399'	8
400' – 499'	2
500' – 599'	2
600' – 699'	2
700' – 799'	0
≥800'	0
Greens in Play	4
Traps in Play	9
Mandatories	0
Islands	1 (3x)

Local Course Rules

Cart Paths - The cart path is defined as the point where the roots of the grass and the concrete edge of the cart path (including raised edging) meet (unless marked by string). All other improvements (see examples below) adjacent to the cart path are not part of the cart path. The out-of-bounds line is a vertical up-and-down plane. The out-of-bounds line is part of the out-of-bounds area. Therefore, a disc landing on dirt or grass growing over a cart path edge is out-of-bounds when 100% of the disc is on the O.B.-side of the vertical plane.



Course Availability - Courses are closed after Wednesday. Players caught playing a closed course are in violation of Player Misconduct and subject to immediate disqualification.

Discs Retrieval (from Back Yards & Water Areas) - Entering into private yards or wading into water to retrieve a disc will be seen as Player Misconduct and subject to immediate disqualification and potential criminal/trespassing charges by the police.

Island Holes - Disc must come to rest on marked island. If island missed, take one-stroke penalty and next shot from the designated drop zone. For every additional shot which does not land on island, follow penalty rule (806.02(D)) for all other out-of-bound shots.

Media Policy - The Host & PDGA reserves the right to approve all video production and professional photography used for any purpose, including social media and commercial needs. Approval for media coverage may be subject to a fee to be determined by Host. Individuals in violation of the media policy will be seen as Player Misconduct and subject to immediate disqualification and potential criminal/trespassing charges by the police.

Sand Traps - The sand trap is defined as the point where the roots of the grass and the sand meet (unless marked by string). The hazard line is a vertical up-and-down plane. The hazard line is part of the hazard area. Therefore, a disc landing on grass growing over a sand trap is in the hazard when 100% of the disc is on the hazard-side of the vertical plane! Treat sand traps as a hazard (one-stroke penalty and play it where it lies). No relief provided from sand traps.

Selling of Merchandise - Permission is not granted to sell merchandise on Wild Horse property without consent of the Tournament Director. Such activities will be seen as Player Misconduct and subject to immediate disqualification.

Two Meter Rule - Not in effect for all courses, all holes.

Water Areas - Water areas are defined as the point where the water and the roots of the grass meet (unless marked by string). The out-of-bounds line is a vertical up-and-down plane. The out-of-bounds line is part of the out-of-bounds area. Therefore, a disc landing on grass growing over water is out-of-bounds when 100% of the disc is on the O.B.-side of the vertical plane!

Zero Tolerance - A player will be disqualified if in violation of any laws or regulations, even if activity occurs before or after a player's round.

Hole 1
Par 3 – 275ft



Hole 2
Par 3 – 354ft

Aces: Jerry Goff (2017 layout)

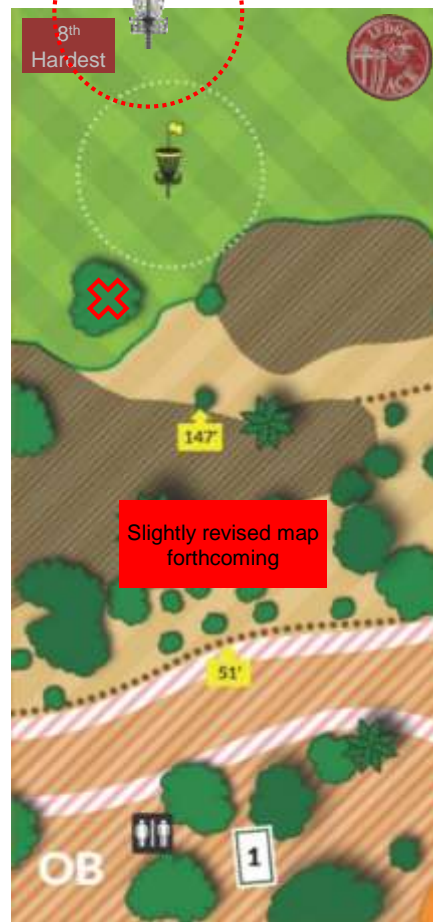
O.B.: Before cart paths.

HAZARD: Sand traps.

RE-TEE: If throw from tee pad never crosses in-bounds, take one-stroke penalty and re-tee.

O.B.: Cart path & beyond.

HAZARD: Sand traps.



	PROS			AMS		
'18 Ave.	2.9(M) / 3.2(W)			3.2(M) / 3.8(W)		
	'18	'17	'16	'18	'17	'16
<Par	29%	NA	44%	16%	NA	22%
=Par	57%	NA	47%	50%	NA	50%
>Par	14%	NA	9%	34%	NA	28%

Minor basket change from 2018 (to middle of fairway, now 50' longer). Major change from 2017, so NA. Major tee pad & minor basket change from 2016 (was 45' longer).

	PROS			AMS		
'18 Ave.	2.8(M) / 3.1(W)			3.21(M) / 3.5(W)		
	'18	'17	'16	'18	'17	'16
<Par	27%	1%	NA	9%	12%	NA
=Par	63%	53%	NA	66%	74%	NA
>Par	10%	46%	NA	25%	14%	NA

Minor tee pad change from 2018 (now 20' longer). Minor tee pads (PRO/AM) & basket change from 2017 (was 20' longer/20' shorter). Major layout change from 2016, so NA.

Hole 3

Par 4 – 621ft



Hole 4

Par 3 – 390ft

Hole 5

Par 3 – 360ft



Hole 6

Par 4 – 294ft

O.B.: Cart path & beyond.

DROP ZONE: As approved by PDGA, if initial throw comes to rest O.B. left of fairway, take one-stroke penalty and next shot from drop zone. Follow normal penalty rules thereafter.

Aces: Jeremy Kopp (2018)

O.B.: Before cart path & left/right; cart path & beyond behind/right of basket.

HAZARD: Sand trap.

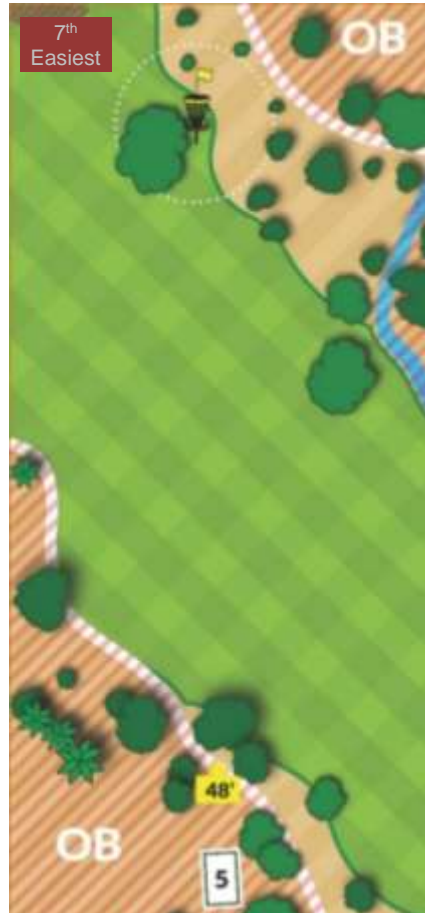
RE-TEE: If throw from tee pad never crosses in-bounds, take one-stroke penalty and re-tee.

O.B.: Before cart path; water/rope; cart path & beyond behind/right of basket.

HAZARD: Sand trap.

RE-TEE: If throw from tee pad never crosses in-bounds, take one-stroke penalty and re-tee.

DROP ZONES: Disc must come to rest on an island. As approved by PDGA, if initial throw comes to rest O.B., take one-stroke penalty and next shot from the first D.Z. If any subsequent throws come to rest O.B., take one-stroke penalty and next shot from the second D.Z. Continue to use second D.Z., with one-stroke penalty, until disc comes to rest on final island. Follow normal penalty rules thereafter.



	PROS			AMS		
'18 Ave.	3.7(M) / 4.2(W)			4.2(M) / 4.8(W)		
	'18	'17	'16	'18	'17	'16
<Par	43%	23%	57%	18%	14%	22%
=Par	38%	43%	36%	47%	44%	50%
>Par	19%	34%	7%	35%	42%	28%

No change from 2018. Minor tee pad & basket change from 2017 (was 25' longer). Minor tee pad & basket change from 2016 (was 80' shorter).

	PROS			AMS		
'18 Ave.	3.0(M) / 3.1(W)			3.3(M) / 4.1(W)		
	'18	'17	'16	'18	'17	'16
<Par	19%	14%	NA	5%	2%	NA
=Par	62%	64%	NA	60%	58%	NA
>Par	19%	21%	NA	35%	40%	NA

No change from 2018. Minor tee pad & basket change from 2017 (was 25' longer). Major layout change from 2016, so NA.

	PROS			AMS		
'18 Ave.	3.0(M) / 3.2(W)			3.1(M) / 3.8(W)		
	'18	'17	'16	'18	'17	'16
<Par	13%	16%	NA	7%	11%	NA
=Par	72%	63%	NA	69%	67%	NA
>Par	15%	21%	NA	24%	22%	NA

No change from 2018. Minor tee pad & basket change from 2017 (was 60' shorter). Major layout change from 2016, so NA.

	PROS			AMS		
'18 Ave.	4.4(M) / 4.6(W)			4.5(M) / 5.1(W)		
	'18	'17	'16	'18	'17	'16
<Par	35%	19%	41%	24%	14%	19%
=Par	18%	36%	24%	22%	31%	21%
>Par	47%	45%	35%	54%	54%	61%

No change from 2018. Minor tee pad change from 2017 (was 40' longer). Minor tee pad & basket change from 2016 (was 65' longer, reversed layout).

Hole 7
Par 3 – 363ft



Hole 8
Par 4 – 555ft

Hole 9
Par 4 – 627ft



Hole 10
Par 3 – 381ft

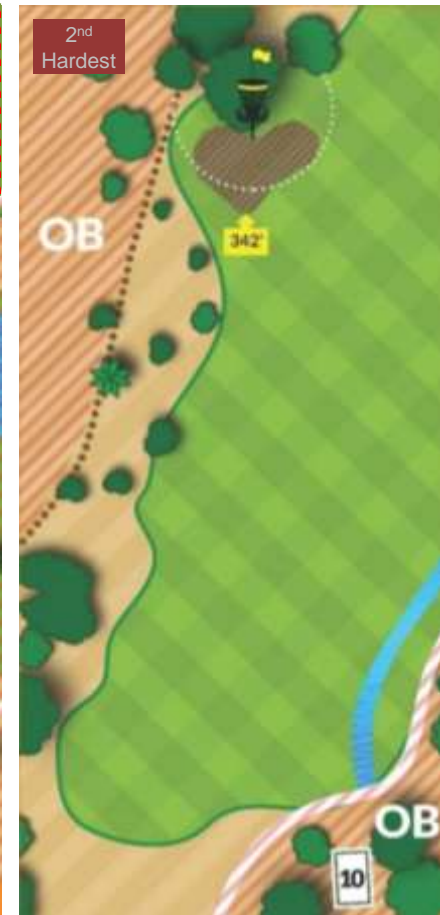
O.B.: Cart path & beyond.

O.B.: Cart path & beyond; water/rope & beyond; green; fence/rope & beyond.

O.B.: Cart path & beyond; fence/rope & beyond; grass/rope & beyond adjacent to basket.

O.B.: Before cart path & right; fence/rope & beyond.
HAZARD: Sand trap.

RE-TEE: If throw from tee pad never crosses in-bounds, take one-stroke penalty and re-tee.



	PROS			AMS		
'18 Ave.	3.1(M) / 3.2(W)			3.1(M) / 3.7(W)		
	'18	'17	'16	'18	'17	'16
<Par	13%	20%	19%	8%	11%	10%
=Par	68%	64%	65%	69%	59%	59%
>Par	19%	16%	16%	23%	30%	31%

	PROS			AMS		
'18 Ave.	3.6(M) / 4.4(W)			3.8(M) / 4.5(W)		
	'18	'17	'16	'18	'17	'16
<Par	44%	NA	NA	30%	NA	NA
=Par	40%	NA	NA	51%	NA	NA
>Par	16%	NA	NA	19%	NA	NA

	PROS			AMS		
'18 Ave.	3.9(M) / 4.2(W)			3.9(M) / 4.9(W)		
	'18	'17	'16	'18	'17	'16
<Par	0%	NA	NA	0%	NA	NA
=Par	34%	NA	NA	26%	NA	NA
>Par	66%	NA	NA	74%	NA	NA

	PROS			AMS		
'18 Ave.	3.6(M) / 4.1(W)			3.9(M) / 4.6(W)		
	'18	'17	'16	'18	'17	'16
<Par	2%	12%	16%	0%	5%	3%
=Par	56%	59%	57%	37%	53%	62%
>Par	42%	29%	27%	62%	42%	35%

No change from 2018. Minor tee pad change from 2017 & 2016 (was 10' shorter).

Minor basket change from 2018 (to right of green, now 30' shorter). Major layout changes from 2017 & 2016, so NA.

Major basket and O.B. change from 2018 (now 100' longer & Par 4, grass O.B. right of basket). Major layout changes from 2017 & 2016, so NA.

No change from 2018. Minor tee pad change from 2017 (was 80' shorter). Minor tee pad change from 2016 (was 15' shorter).

Hole 11
Par 4 – 500ft



Hole 12
Par 3 – 375ft

Hole 13
Par 3 – 249ft



Hole 14
Par 3 – 453ft

O.B.: Before cart path & right; fence/rope & beyond; in water/rope area; cart path & beyond behind basket.
RE-TEE: If throw from tee pad never crosses in-bounds, take one-stroke penalty and re-tee.

O.B.: In water/rope area.
HAZARD: Sand traps.
CART PATH VARIANCE: Only hole on course where the cart path (and prior/beyond) is in bounds.

Aces: Johannes Hogberg (2018)
O.B.: Before cart path & right; green; cart path & beyond behind basket.
HAZARD: Sand traps.
RE-TEE: If throw from tee pad never crosses in-bounds, take one-stroke penalty and re-tee.

O.B.: Cart path & beyond; green.



	PROS			AMS		
'18 Ave.	4.0(M) / 4.3(W)			4.1(M) / 5.0(W)		
	'18	'17	'16	'18	'17	'16
<Par	33%	1%	3%	22%	0%	0%
=Par	38%	54%	65%	44%	45%	45%
>Par	29%	45%	32%	34%	55%	55%

No change from 2018. Major tee pad change from 2017 (was Par 3 & 70' shorter). Major tee pad change from 2016 (was Par 3 & 80' shorter).

	PROS			AMS		
'18 Ave.	2.9(M) / 3.5(W)			3.2(M) / 3.7(W)		
	'18	'17	'16	'18	'17	'16
<Par	21%	16%	50%	7%	6%	25%
=Par	68%	69%	47%	66%	68%	65%
>Par	11%	15%	3%	27%	26%	10%

No change from 2018. Minor tee pad change from 2017 (was 15' longer). Minor tee pad change from 2016 (was 60' shorter).

	PROS			AMS		
'18 Ave.	3.1(M) / 3.4(W)			3.0(M) / 3.4(W)		
	'18	'17	'16	'18	'17	'16
<Par	23%	48%	30%	20%	41%	13%
=Par	42%	43%	65%	55%	39%	62%
>Par	35%	9%	5%	26%	19%	25%

No change from 2018. Minor tee pad change from 2017 (was 35' shorter). Minor tee pad & basket change from 2016 (was 65' longer).

	PROS			AMS		
'18 Ave.	3.4(M) / 4.2(W)			3.9(M) / 4.3(W)		
	'18	'17	'16	'18	'17	'16
<Par	8%	7%	6%	0%	1%	0%
=Par	43%	51%	70%	32%	48%	46%
>Par	48%	42%	24%	68%	51%	54%

Minor basket change from 2018 (to right, now 20' shorter). Minor tee pad & basket change from 2017 (was 25' longer). Minor tee pad & basket change from 2016 (was 85' longer).

Hole 15
Par 3 – 345'
INFINITE DISCS

INFINITE DISCS

Hole 16
Par 3 – 327'
INFINITE DISCS

Hole 17
Par 3 – 328'
INFINITE DISCS

INFINITE DISCS

INFINITE DISCS

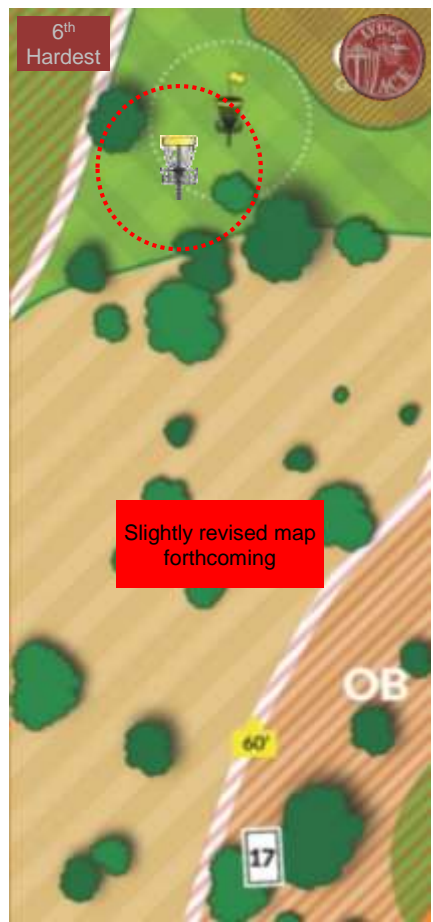
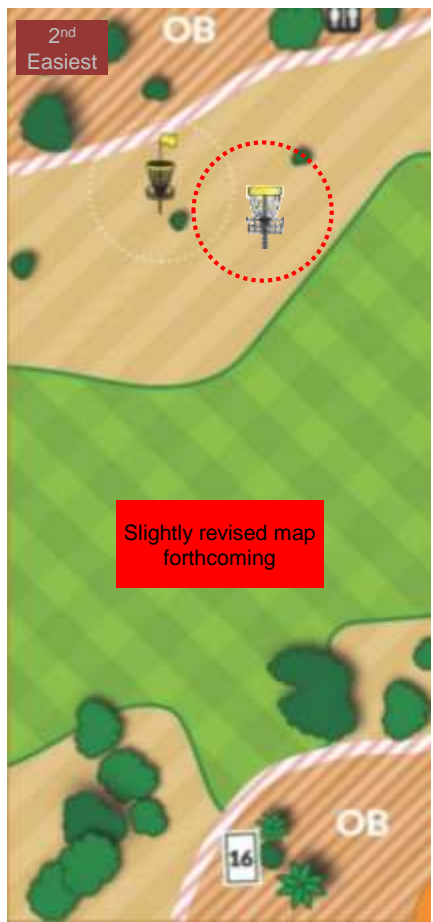
Hole 18
Par 3 – 405'
INFINITE DISCS

O.B.: Cart path & beyond.

O.B.: Before cart path & right; cart path & beyond behind basket.
RE-TEE: If throw from tee pad never crosses in-bounds, take one-stroke penalty and re-tee.

Aces: Ron Brown & Conrad Damon (2016 layout)
O.B.: Cart path & beyond; green.
HAZARD: Sand traps.
RE-TEE: If throw from tee pad never crosses in-bounds, take one-stroke penalty and re-tee.

O.B.: Cart path & beyond.
HAZARD: Sand traps.



	PROS			AMS		
'18 Ave.	3.0(M) / 3.4(W)			3.2(M) / 3.7(W)		
	'18	'17	'16	'18	'17	'16
<Par	11%	12%	16%	8%	3%	4%
=Par	71%	60%	67%	65%	64%	60%
>Par	18%	28%	17%	27%	33%	36%

No change from 2018. Minor tee pad change from 2017 & 2016 (was 45' longer).

	PROS			AMS		
'18 Ave.	2.9(M) / 3.0(W)			3.0(M) / 3.8(W)		
	'18	'17	'16	'18	'17	'16
<Par	29%	3%	NA	13%	0%	NA
=Par	57%	52%	NA	64%	43%	NA
>Par	14%	45%	NA	23%	57%	NA

Minor basket change from 2018 (to side of hill, now 15' shorter). Minor tee pad & major basket change from 2017 (was 160' longer). Major layout change from 2016, so NA.

	PROS			AMS		
'18 Ave.	3.2(M) / 3.5(W)			3.3(M) / 4.2(W)		
	'18	'17	'16	'18	'17	'16
<Par	8%	NA	37%	6%	NA	18%
=Par	64%	NA	56%	56%	NA	67%
>Par	27%	NA	7%	39%	NA	15%

Minor basket change from 2018 (to bottom of hill, now 20' shorter). Major layout change from 2017, so NA. Major tee pad & basket change from 2016 (was 10' shorter).

	PROS			AMS		
'18 Ave.	3.2(M) / 3.4(W)			3.4(M) / 4.0(W)		
	'18	'17	'16	'18	'17	'16
<Par	2%	1%	15%	1%	1%	3%
=Par	73%	66%	76%	60%	51%	69%
>Par	25%	33%	9%	39%	48%	28%

No change from 2018. Minor tee pad & basket change from 2017 (was 30' longer). Minor tee pad & basket change from 2016 (was 15' shorter).